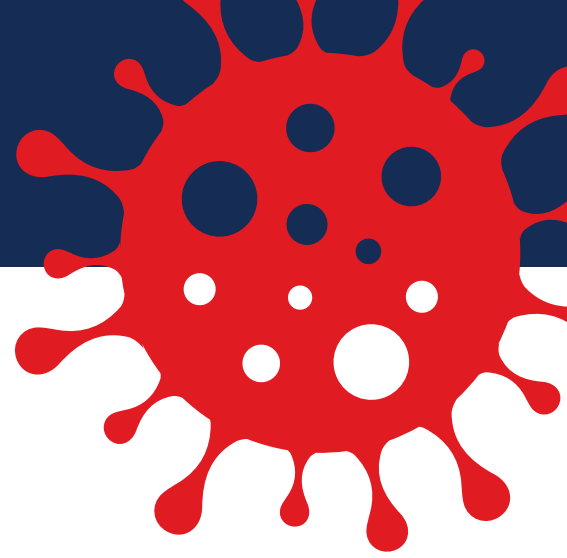


# COVID-19 Patient Dataset



## INSTRUCTIONS

Here are step-by-step instructions for how faculty members, principal investigators and other authorized staff may access the UF Health COVID-19 Patient Dataset provided by the Integrated Data Repository team.

View the [COVID-19 Patient De-identified Dataset for Research](#) for additional resources.

### QUICK LINKS TO:

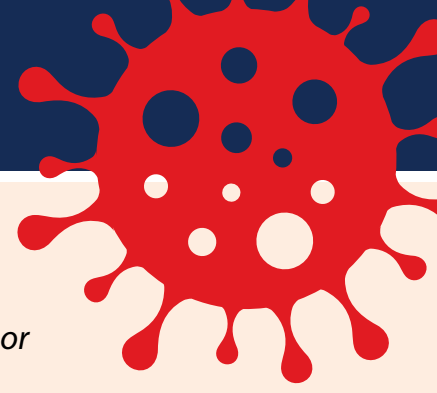
- [Accessing IDR1 Share from Apple macOS \(Page 2\)](#)
- [Accessing IDR1 Share from Windows 10 Workstation or Virtual Machine \(Page 3\)](#)
- [Go to the UF Health Secure VPN \(use with Pulse Secure\)](#)
- [Go to the UF Secure VPN](#)

Connect with us at:  
[IRBDataRequest@ahc.ufl.edu](mailto:IRBDataRequest@ahc.ufl.edu)

**UF** Clinical and Translational  
Science Institute  
UNIVERSITY of FLORIDA

**UFHealth**  
INFORMATION TECHNOLOGY

# COVID-19 Patient Dataset

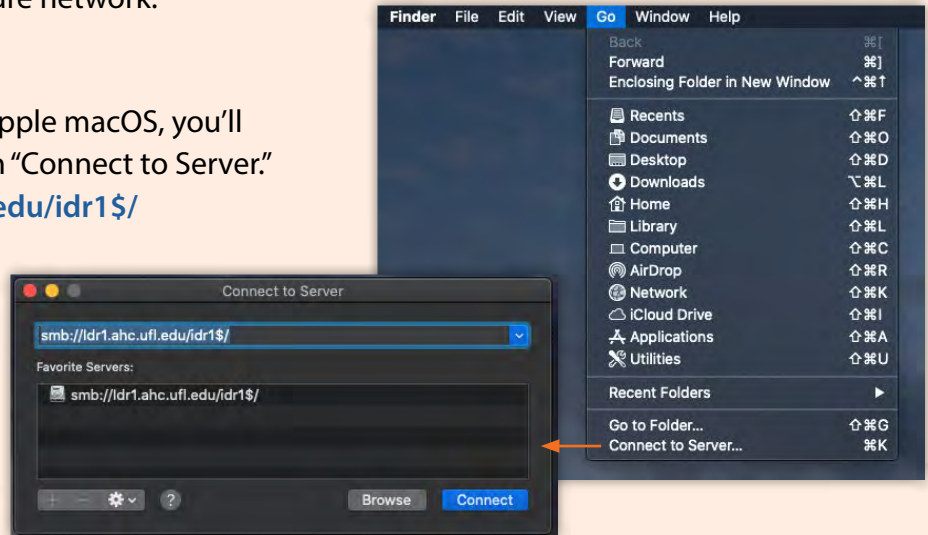


## Accessing IDR1 Share from Apple macOS

If you are using an on-site managed computer and are connected by Ethernet cable or to the secure UF Health wireless network you may go to Step 2.

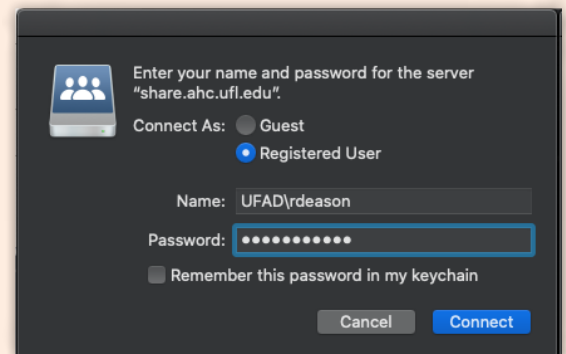
1. For off-network managed devices or personal devices, you will need to first sign in to the UF Health Secure VPN.
  - a.) Use <https://vpn.ufhealth.org> and the associated **Pulse Secure Client**, or
  - b.) Use <https://vpn.ufl.edu> and log in with your credentials in this format (username@ufl.edu/health) to ensure you are placed on a UF Health secure network.

2. To get to the IDR1 Share directly on Apple macOS, you'll need to use the "Finder" tool and then "Connect to Server."  
Use this address: `smb://idr1.ahc.ufl.edu/idr1$/`

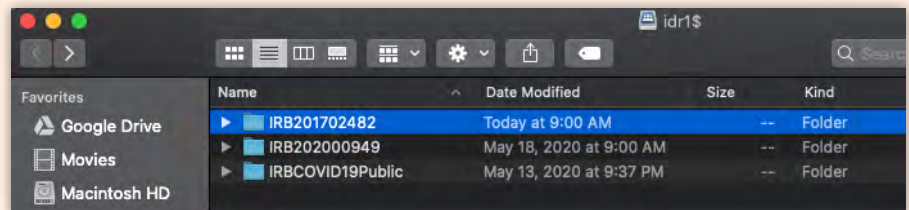


3. When prompted for Authentication, use DOMAIN\Username (example: UFAD\rdeason). Select the appropriate Domain based on your role and research/work area:

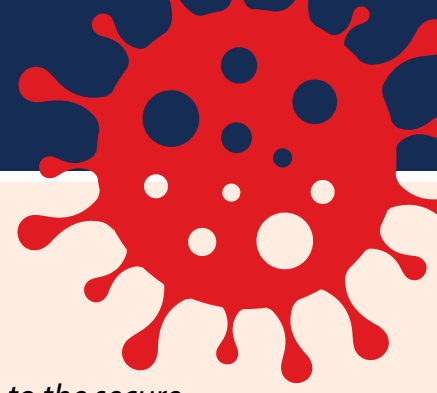
- UF faculty/staff: **UFAD**
- UF Health Shands staff : **SHANDS**
- Jacksonville faculty/staff: **UMC**



4. The IDR1 Share will show all folders currently available to you.



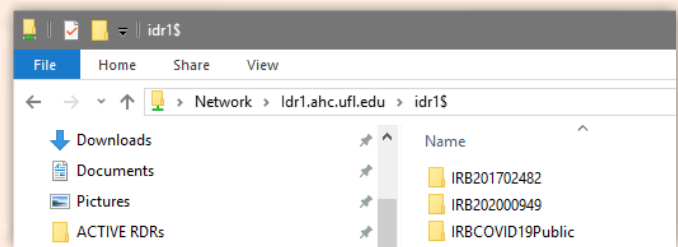
# COVID-19 Patient Dataset



## Accessing IDR1 Share from Windows 10 Workstation or Virtual Machine

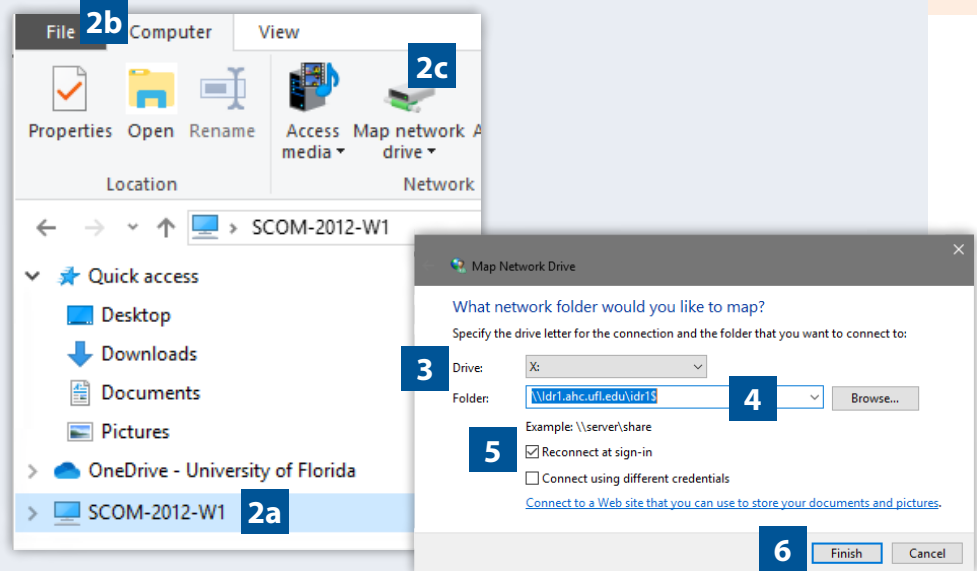
If you are using an on-site managed computer and are connected by Ethernet cable, to the secure UF Health wireless network or you are using a UF Health Virtual Machine you may go to Step 2.

1. For off-network managed devices or personal devices, you will need to first sign in to the UF Health Secure VPN.
  - a.) Use <https://vpn.ufhealth.org> and the associated **Pulse Secure Client**, or
  - b.) Use <https://vpn.ufl.edu> and log in with your credentials in this format (username@ufl.edu/health) to ensure you are placed on a UF Health secure network.
2. To get to the IDR1 Share, you can use the share folder address directly in Windows Explorer: `\\ldr1.ahc.ufl.edu\idr1$`



If you'd like to have an easily accessible mapped share folder, you can map a network drive as follows:

1. Open Windows Explorer
2. Map Network Drive:
  - a.) Click your **computer name**.
  - b.) Choose the **Computer** tab.
  - c.) Then click **Map network drive**.
3. Pick an available drive letter from the Map Network Drive window.
4. Add `\\ldr1.ahc.ufl.edu\idr1$` address to the Folder field.
5. Check the **Reconnect at sign-in** box.
6. Click **Finish**.



### NOTES:

- If you have access to multiple IRBs or Projects, you will see them in this share.
- There is limited accessibility to ensure that only those who are approved to read the contents of each folder can access the contents.